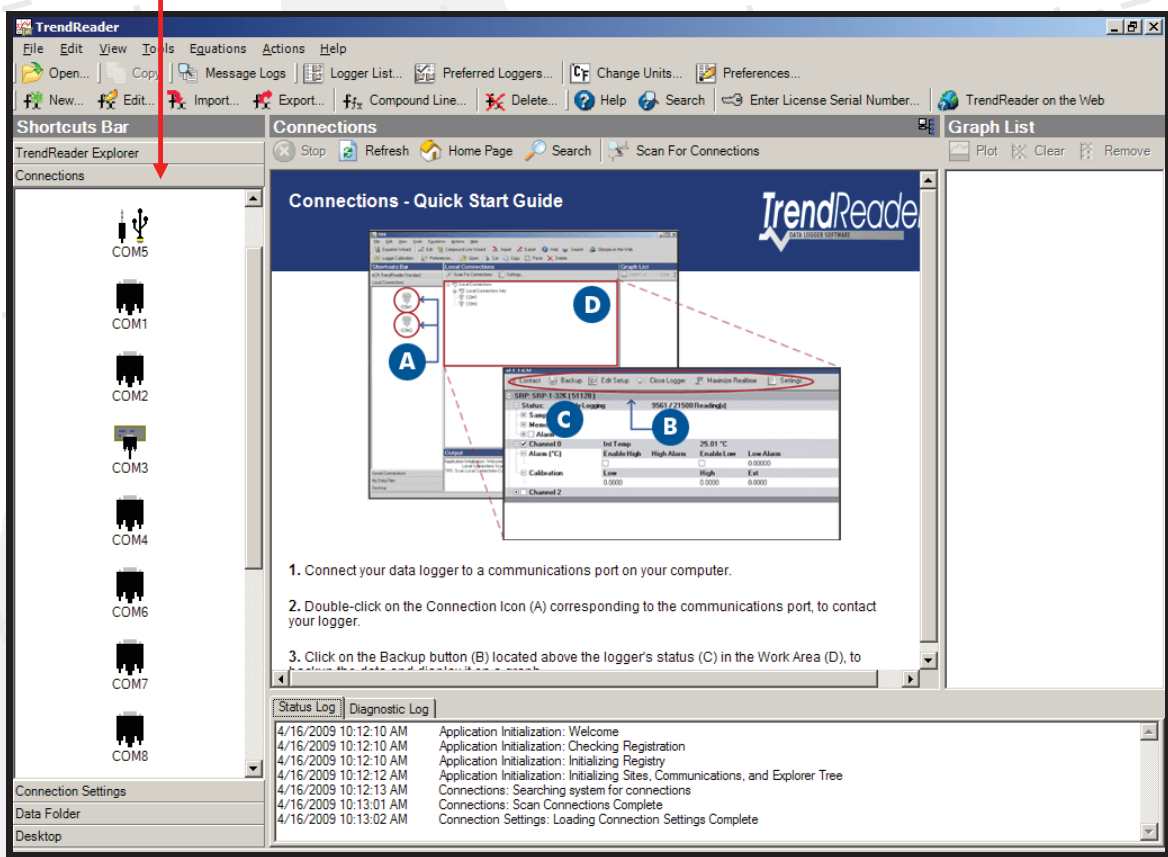




How do I create custom logger connections in TrendReader 2?

TrendReader 2 allows you to create customized COM connections based on available COM ports on your PC. These custom COM connections can be labeled for easy identification and can contain customized line settings unique to each connection.

When a serial COM connection (real or virtual) is available on your PC it will appear in the **Connections** tab in the Shortcuts Bar:



All connections are associated with a serial COM port. USB devices are also treated as serial COM ports in TrendReader 2. IC-102 and LIC-102, USB to Serial converters, Ethernet to Serial adaptors and Cellular modems all install to virtual serial COM ports. All these devices utilize drivers that automatically assign the virtual COM port to the respective device.

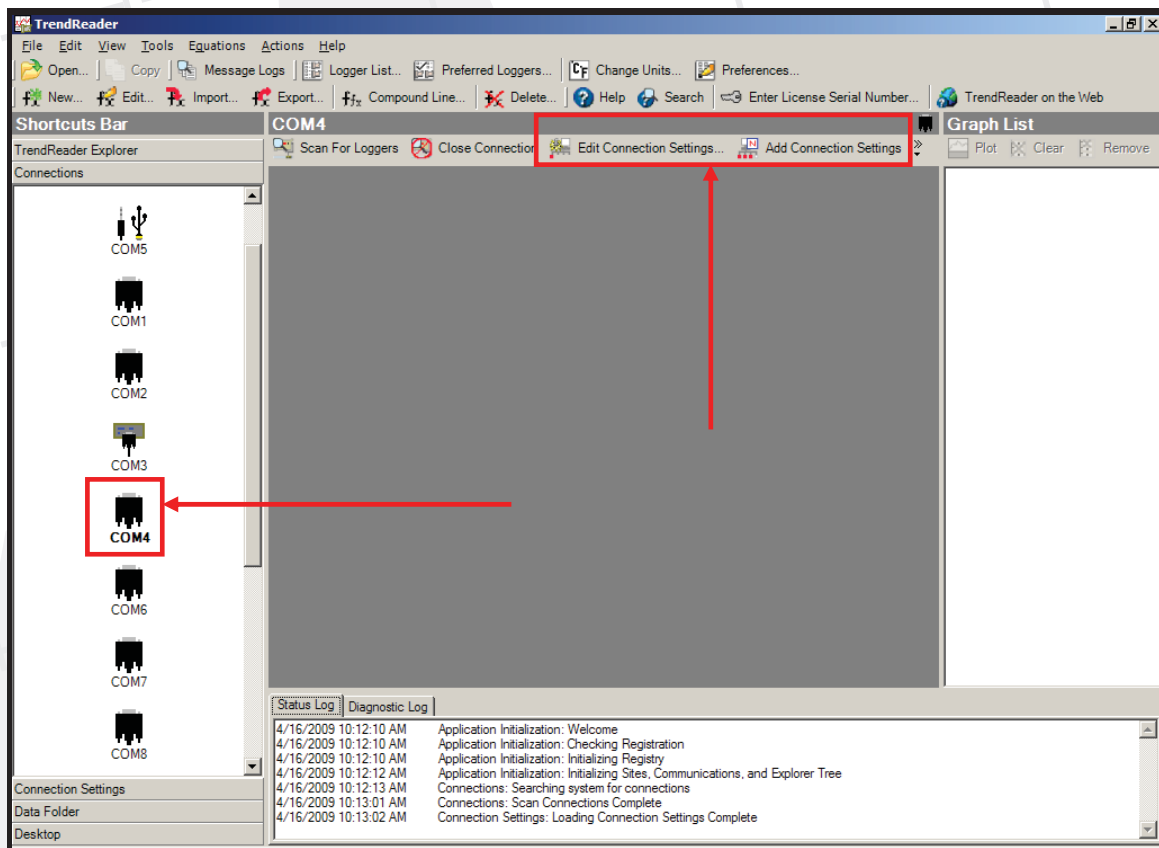
Continued on Page 2



How do I create custom logger connections in TrendReader 2?

Continued from Page 1

Once a port is available, its settings can be altered to optimize the connection further, or copied to build a custom connection (which itself can be modified further) that can be applied to a specific device or site. Simply click on the **COM** port icon in the Shortcuts Bar and access **Edit Connection Settings** and **Add Connection Settings**.



This functionality is useful if you have a modem on a particular **COM** port and use it to call two or three different sites. You can create a unique **COM** connection for each of these sites, complete with its own label, phone number for dialing, logger list (if a logger network is involved), and other customized settings such as baud rate etc. By clicking on the respective **COM** port and clicking on **Scan for Loggers**, TrendReader 2 will access the site directly using the custom configuration.

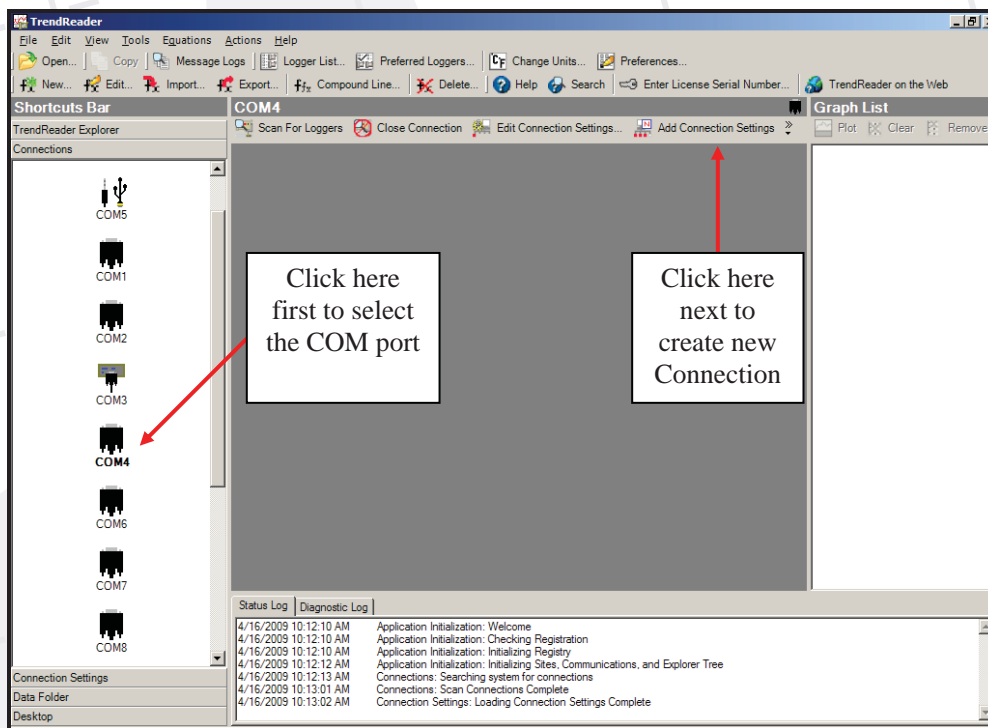
Continued on Page 3



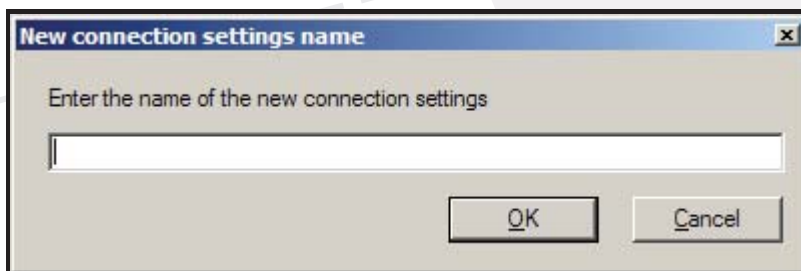
How do I create custom logger connections in TrendReader 2?

Continued from Page 2

Likewise, if you install an Ethernet to Serial adaptor device such as a Moxa NPort, Digi SP1, or a Lava Link unit, you can create a custom connection for each of these devices with their own labels and icons for easy connection to. When you install one of these devices, its respective software will create the virtual serial **COM** port which you can custom configure. Simply click on the **COM** icon that is created in **Connections** and then select **Add Connection Settings**:



The following appears:



Enter the name of the new connection and click OK. By clicking on the **Connection Settings** tab in the Shortcuts Bar, you will see the custom connection there.

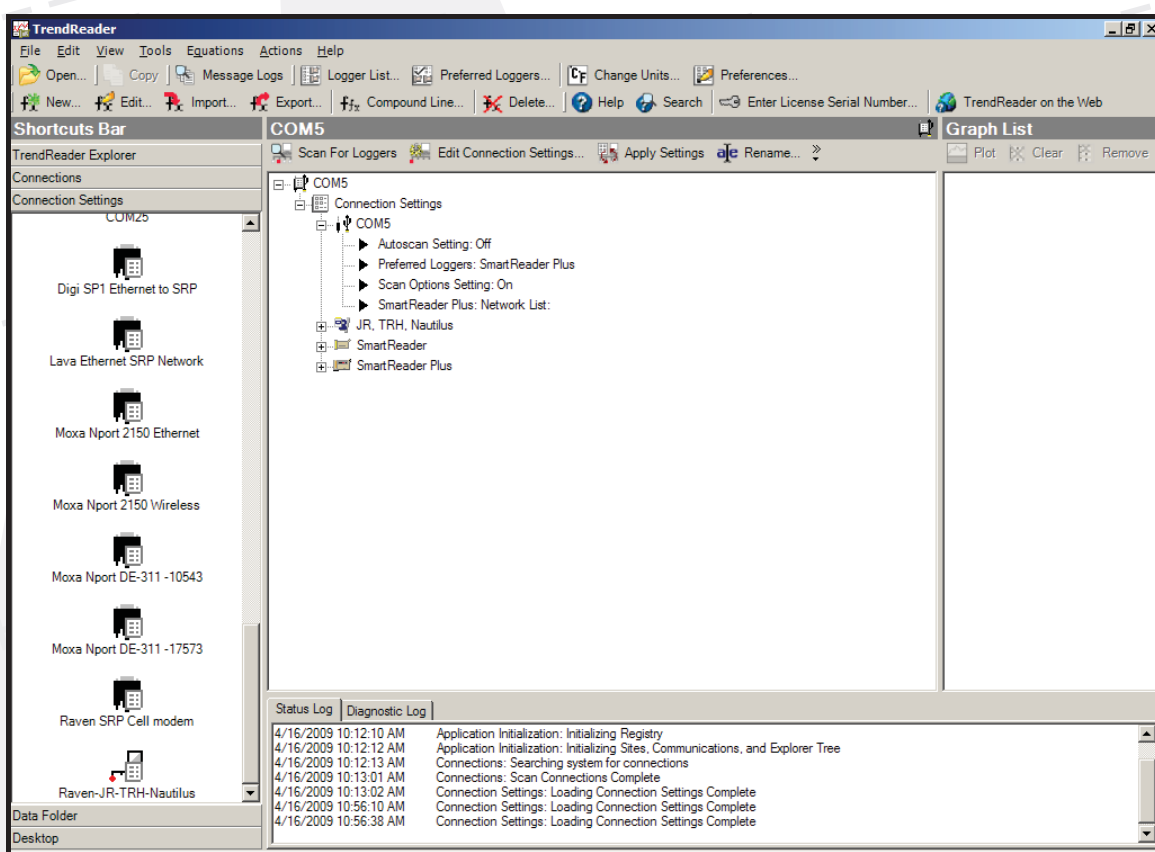
Continued on Page 4



How do I create custom logger connections in TrendReader 2?

Continued from Page 3

In the following picture you can see numerous custom connections that have been created. These custom connections are now displayed in **Connection Settings**:



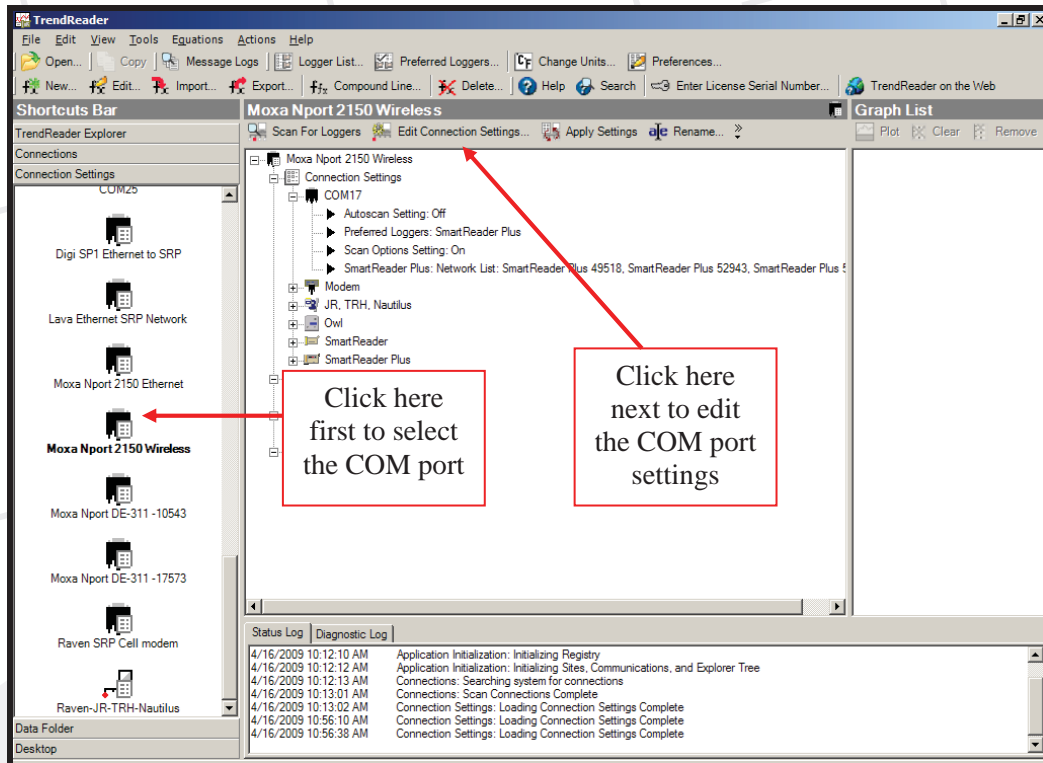
Continued on Page 5



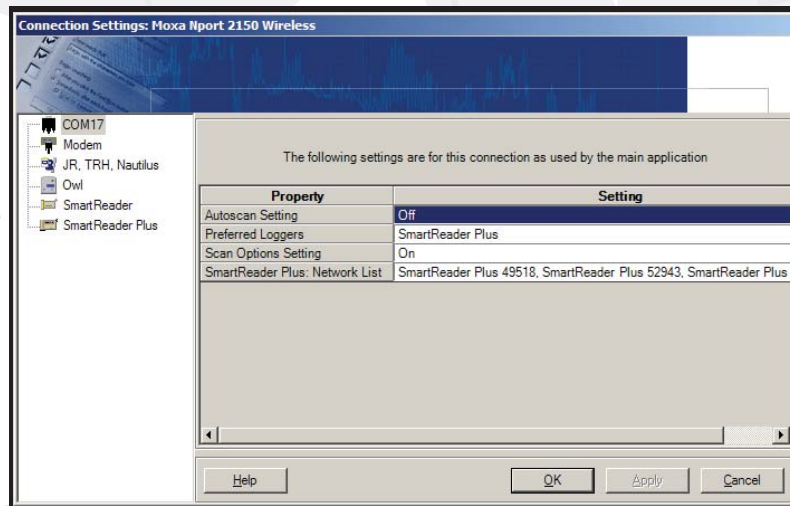
How do I create custom logger connections in TrendReader 2?

Continued from Page 4

By clicking on the icon you can further customize the connection:



You can then change the settings and fine-tune the **COM** port for the particular data loggers involved in the connection.



Once the settings are set, click OK to save the settings.

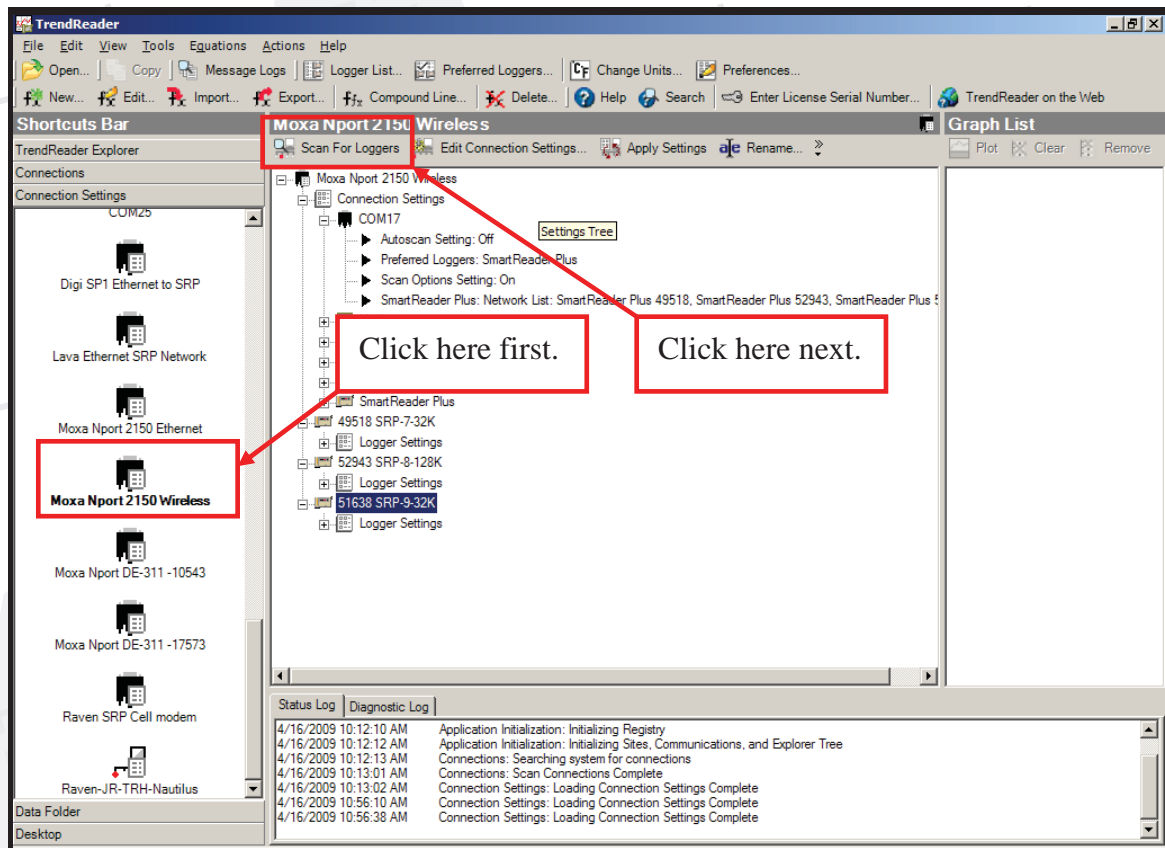
Continued on Page 6



How do I create custom logger connections in TrendReader 2?

Continued from Page 5

To access the custom connection, simply double click on the icon *or* single click to select and then click Scan For Loggers.



TrendReader 2 will now scan the custom port and access the data logger(s) connected to it.