



Can I communicate with multiple COM ports at the same time with TrendReader 2?

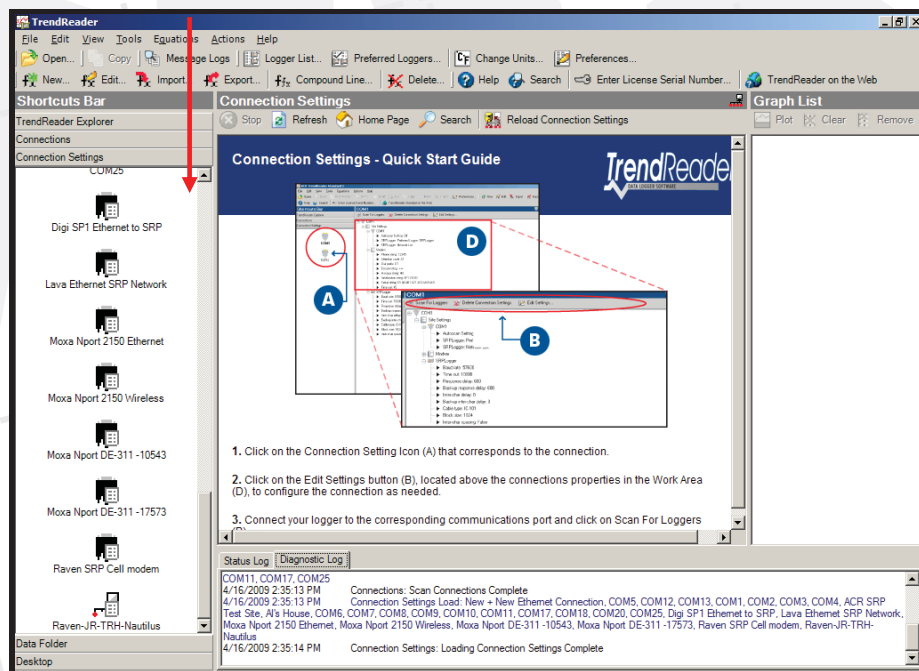
Yes you can. TrendReader 2 has the ability to communicate with multiple **COM** ports simultaneously. You can access SmartReader Plus data loggers (and networks of SmartReader Plus data loggers), SmartReader, JR-1000, TRH-1000, and Nautilus simultaneously. You can view all of the loggers' realtime readings in separate windows at the same time. This applies to direct connections through IC-101 and IC-102 interface cables, USB to serial adaptors, wired or wireless Ethernet to serial connections, and landline or cell modems. You can also perform this function with TRH-1000, JR-1000, and Nautilus data loggers on separate **COM** ports.

Example:

In this example we will communicate with the following simultaneously, using TrendReader 2 and display all of the data loggers' realtime readings:

1. SRP 7 using an IC-102 connected directly to the PC.
2. SRP 7, SRP 8 and SRP 9 logger network connected to a Moxa NPort 2150 Ethernet to serial adaptor, wirelessly connected to a LAN.
3. SRP 6, SRP 1 and SRP 2, with EHO20A External RH and temperature sensor, logger networked connection to a Sierra Wireless / Airlink Raven cellular modem.
4. JR-1000 on a USB to serial adapter connected to the PC.

First, launch TrendReader 2 and select **Connection Settings** in the **Shortcuts Bar**:



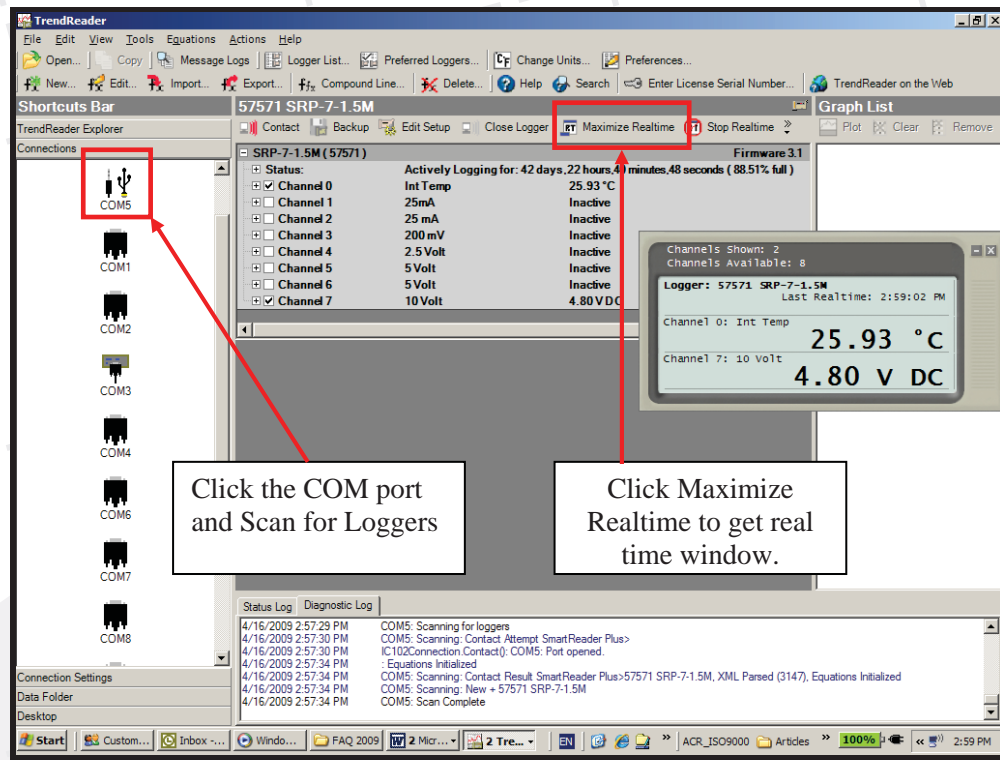
Continued on Page 2



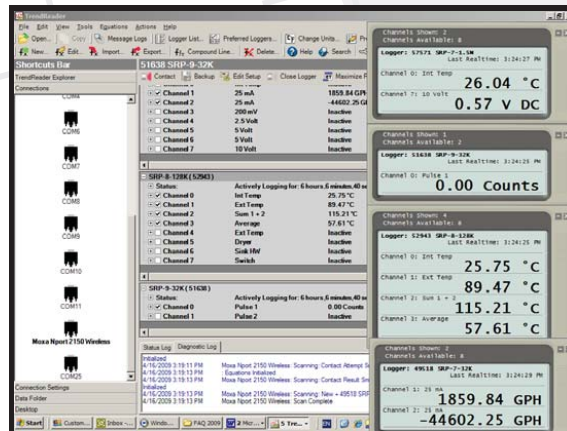
Can I communicate with multiple COM ports at the same time with TrendReader 2?

Continued from Page 1

Next, simply scan the connection you are interested in and make contact with the data logger(s). When the data logger's status screen appears, click on **Maximize Realtime** to open a realtime display window.



Repeat the process with each Connection you want to display (for data logger networks, click on each logger in the status window before clicking **Maximize Realtime**). A separate realtime window will open for each data logger. These windows can be dragged to arrange them on the screen. (Note: They cannot be resized at this time.)



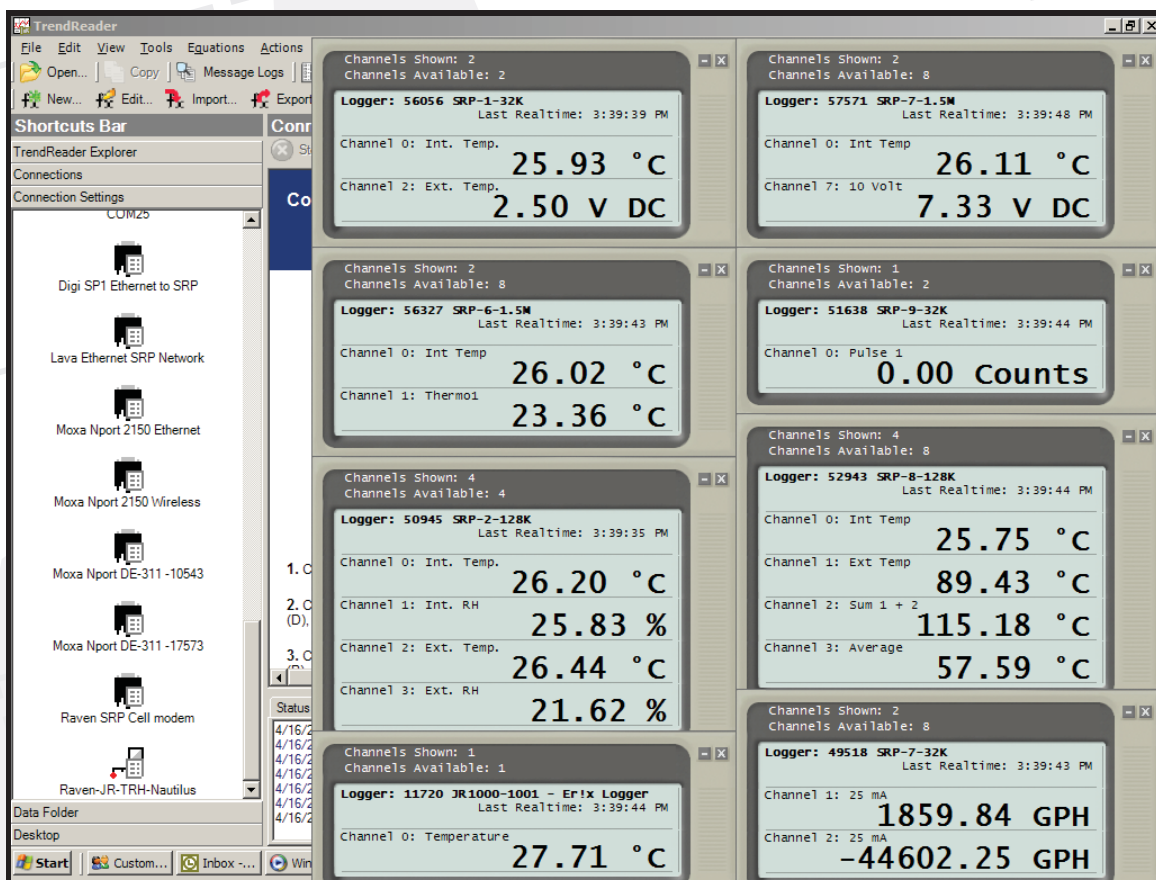
Continued on Page 3



Can I communicate with multiple COM ports at the same time with TrendReader 2?

Continued from Page 2

Continue until you have as many realtime windows open and displayed as is practical. The completed example looks like this:



All data loggers and their respective channels are displayed and are updating in real-time.